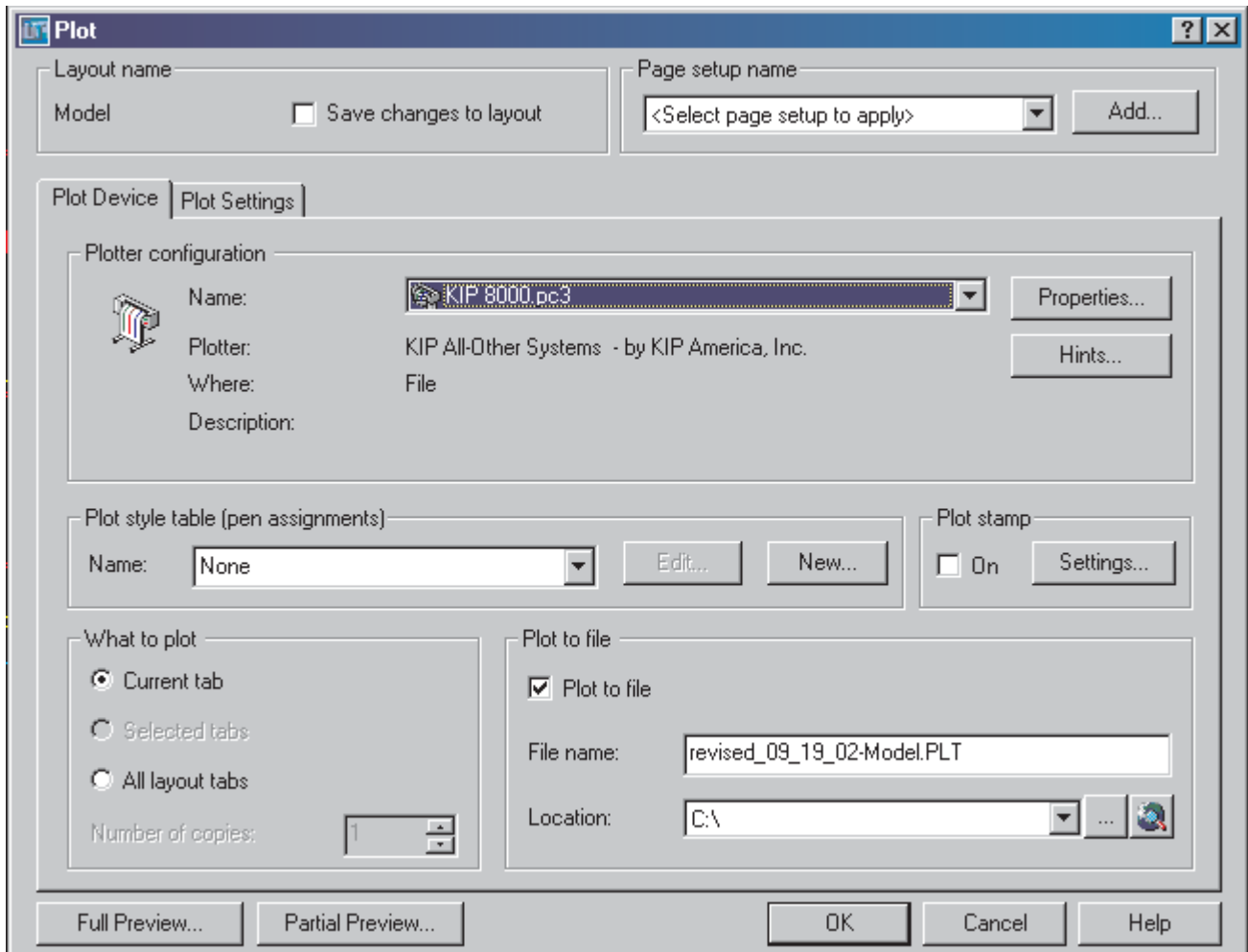
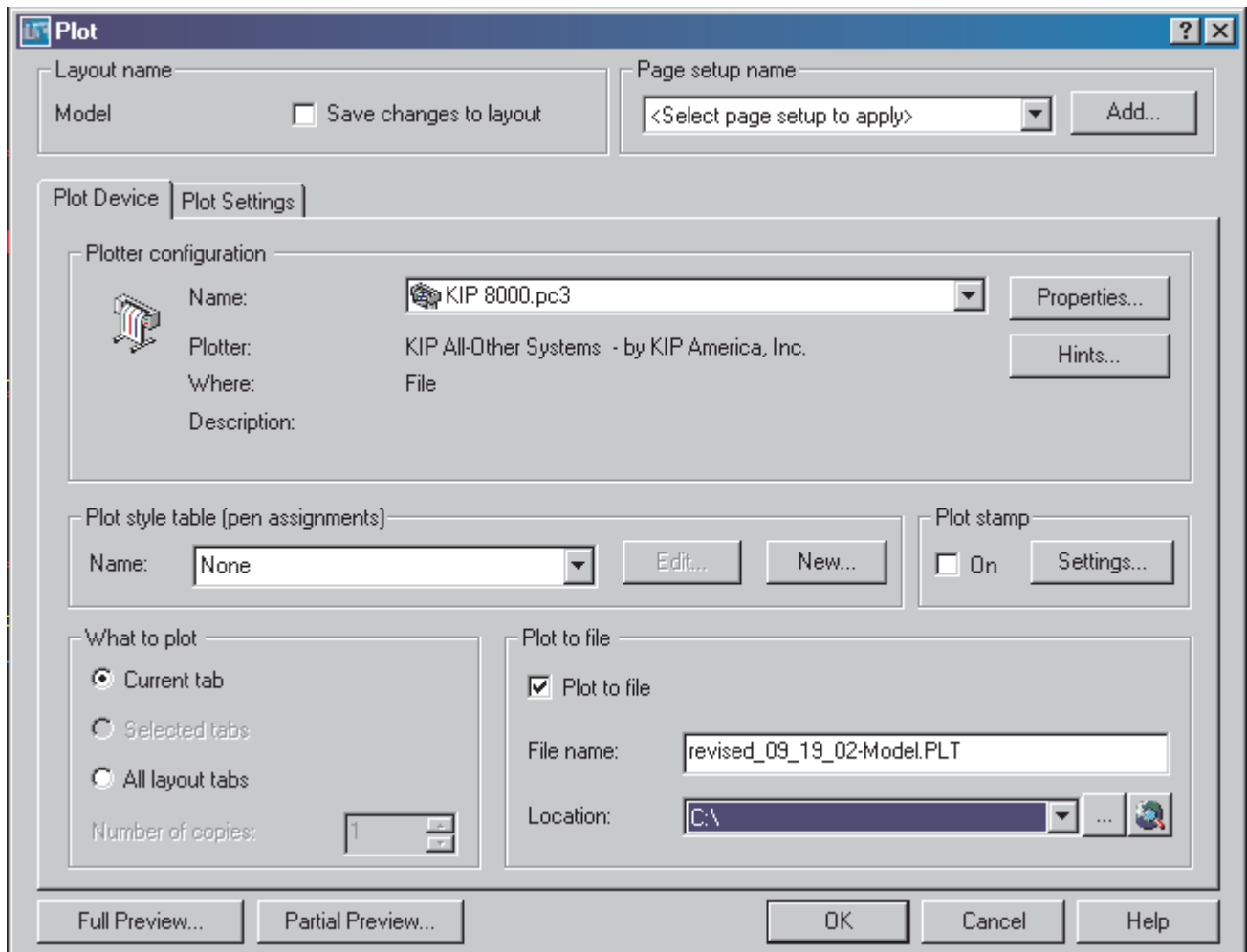


Plotting to file is the same as normal plotting with a few minor changes. Start by clicking on the File menu and selecting Plot (or CTRL + P).

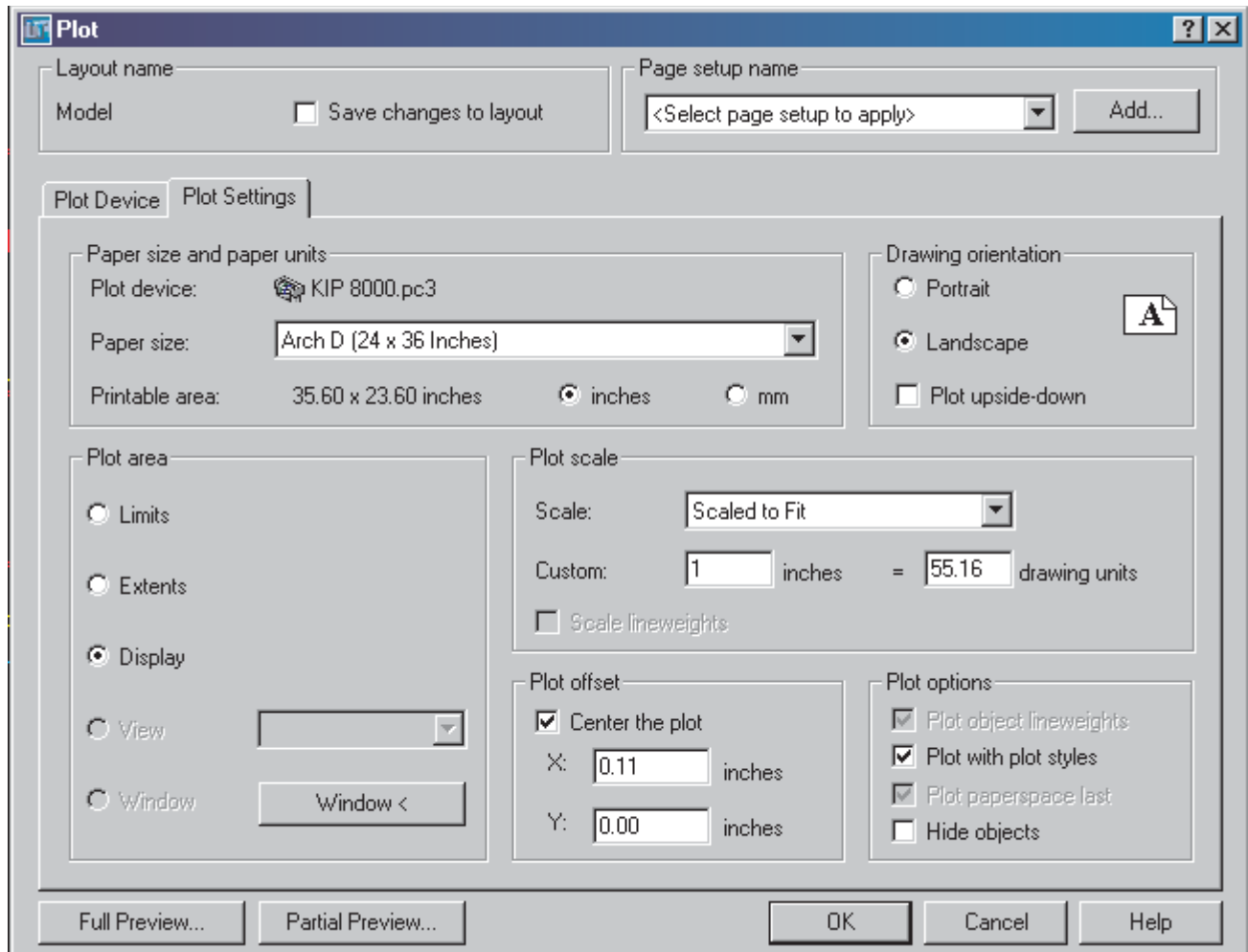
Click on the Plot Device tab. Select one of our printers (Kip 8000 or HP 750C).

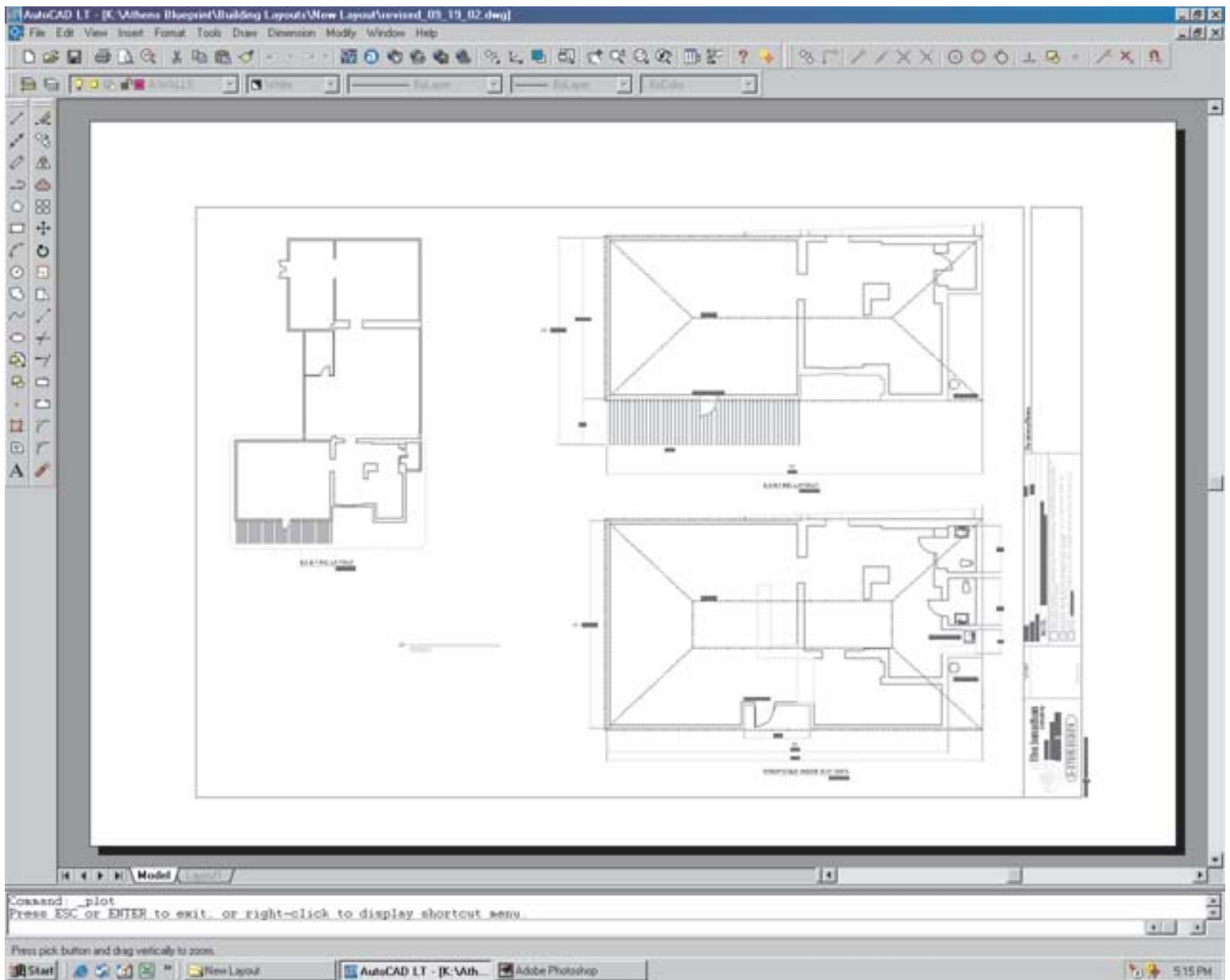




Make sure the Plot to File check box is checked. Set the location you want the .PLT file to be saved to. An easy location to save to is your desktop.

Click on the Plot Settings tab. Select the paper size that you want your plot to be. Choose the scale of your drawing. When all of the settings are set click on the Full Preview button.





The preview is how the plot is going to come out, so make sure that it looks how you want it to look. If you need to make some changes, right click and hit exit to go back to the Plot dialog. Otherwise right click and select Plot to create the .PLT file.

When looking at the full preview, also make sure that there is not too much wasted paper around your drawing. If there is too much wasted paper, you may be charged for it.

